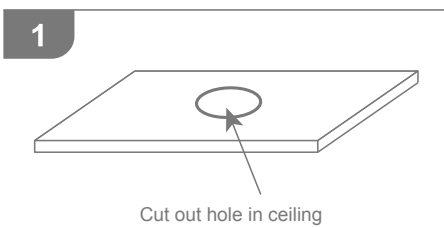


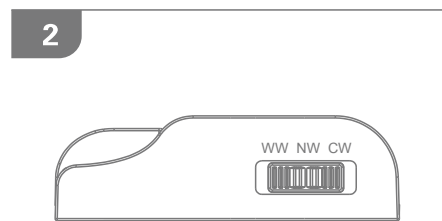
### Swap 8 Sleek

#### Specifications

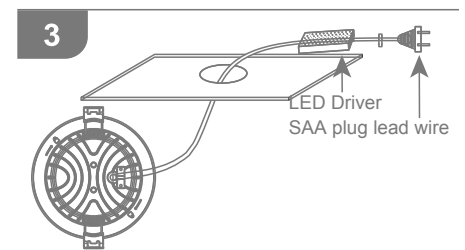
Voltage:	240V AC	Lumen (±5%):	Warm White 3000K - 800lm Neutral White 4000K - 900lm White 5700K - 850lm	Dimmable:	Yes
Power:	8W	Beam Angle:	60°	Operating Temp:	-20 ~ 45°C
IP Rating:	IP44	CCT:	3000K - 4000K - 5700K	Power Factor:	0.9
CRI:	≥80	Lifespan:	35,000hrs		



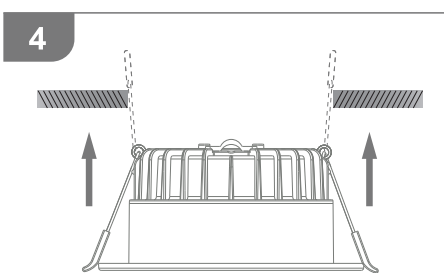
Cut out a hole in the ceiling. Ensure there is sufficient clearance in the area where you will be positioning the fitting.



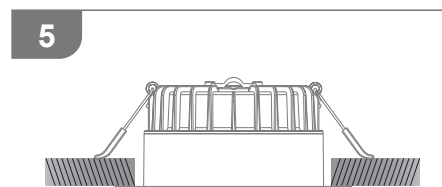
Choose the preferred colour temperature via the switch on the controller.



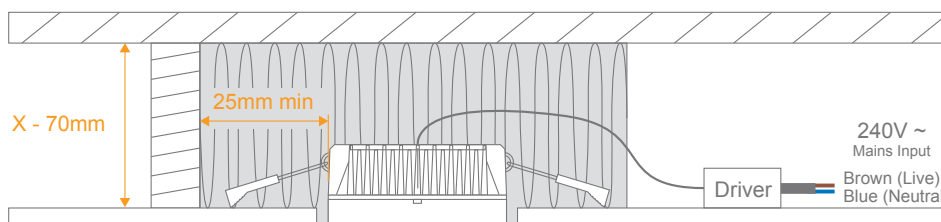
Connect the fitting to the mains via the power plug.



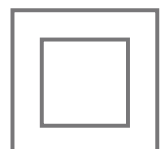
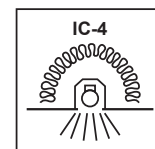
Fit the fixture in the ceiling by lifting the spring clips upwards.



Once in place the spring clips should be against the top of the ceiling and support the fitting.



**Note:** The LED driver is NOT suitable for covering with insulation material.



**Note:** -The lamp must be installed by professional electrician  
-Ensure the power supply is switched off before fitting this product

-Do not touch the lamp when in use  
-Keep away from hot steam and corrosive gas